



MEMBERSHIP

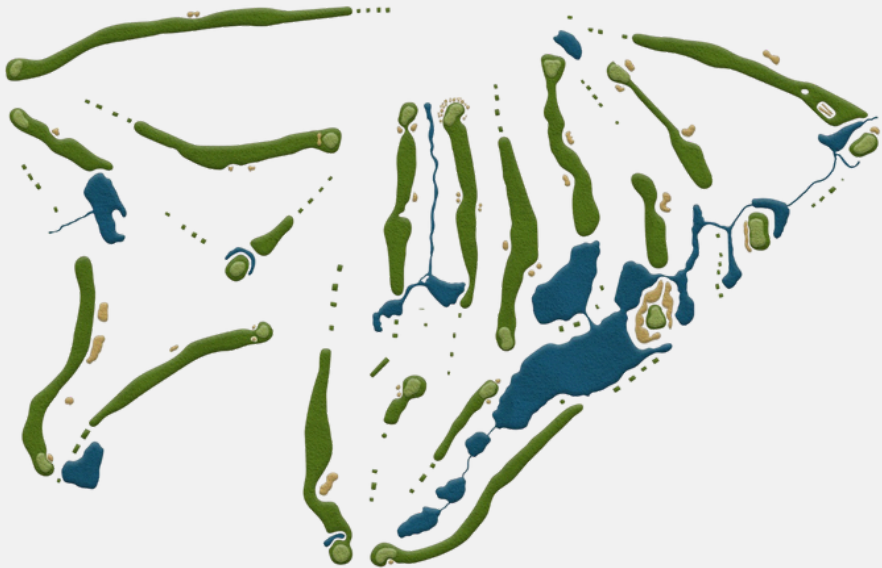
Packages & Applications



MEMBERSHIP PACKAGES & APPLICATIONS

At Mount Kipipiri Golf & Resort, we are proud to offer a range of tailored membership options designed to suit diverse lifestyles and stages of life. Our Membership Portfolio – comprising Full Membership, Expatriate Membership, and Junior Membership – provides individuals and families the opportunity to become part of a distinguished golfing community set against the serenity of the highlands.

Whether you are seeking unrestricted access and long-term privileges, a flexible option during your time in Kenya, or a platform to nurture young talent in the sport, each category is thoughtfully structured to deliver exceptional value, access to premier facilities, and a lifestyle defined by recreation, connection, and refinement.



MOUNT KIPIPIRI GOLF & RESORT

Kipipiri, Kenya · Par 72 · Length 7,100 yards

MEMBERSHIP BENEFITS

At Mount Kipipiri Golf & Resort, we are committed to building a world-class destination that offers more than just golf – it's a lifestyle. As we continue to develop our facilities, our members will enjoy growing privileges and unmatched value.



Current Member Benefits:

- 10% Discount on food and beverages at the clubhouse
- 4 Complimentary Nights at the resort every year (excludes weekends and public holidays)
- Exclusive Room Booking Discounts for additional stays at the resort
- Priority Access to club-hosted events and tournaments
- Discounts at the pro shop

Upcoming Member Privileges:

We are excited to announce our next phase of expansion, and members will be among the first to benefit from:

- Full Access to the planned:
 - Padel Courts & Tennis Courts
 - Hiking, Horse riding, Botanical gardens
 - Swimming Pool & Wellness Area
- Preferential Rates on accommodation and extended resort stays
- Exclusive Member Offers on events, experiences, and merchandise

Why Join Now?

Early membership guarantees:

- Access to all current and future benefits
- Priority as limited membership slots are released
- Locked-in value as we continue to expand our offerings

Joining Mount Kipipiri Golf & Resort means being part of a premium lifestyle destination in the making – we look forward to welcoming you as we grow.

FULL MEMBERSHIP APPLICATION PROCESS



Submission Requirements

Applicants are required to submit the following documents for consideration:

- A letter of introduction from the applicant, outlining their interest in joining the club.
- A current Curriculum Vitae (CV).
- A valid Passport/ID copy and passport-sized photograph.
- A fully completed Membership Application Form (available at the Reception or upon request via email).

Documents may be submitted in person at the Mount Kipipiri Golf & Resort Reception or sent as scanned copies via email to:

✉ Membership@mtkipipiri.com

Review and Vetting

All applications will be reviewed and vetted by the Chairman, Directors, and General Manager of Mount Kipipiri Golf & Resort.

Outcome

Once vetting is complete, successful applicants will be notified and onboarded as official members of the Club.

Entrance Fee Payment

Successful candidates will be invited to make full payment of the entrance fee within thirty (30) days from the date of official communication.

Failure to make payment within this period will result in automatic lapse of the offer of membership.

EXPATRIATE MEMBERSHIP APPLICATION PROCESS



Initial Submission

The expatriate's employer shall write to the General Manager introducing the candidate. The employer must include:

- A current Curriculum Vitae (CV) of the candidate.
- Any relevant supporting documents.

Application Form & Payment Details

Upon receipt of the letter and required documents, the General Manager shall issue the Expatriate Membership Application Form and entrance fee payment details to the candidate.

Submission of Application

The expatriate applicant must return:

- The duly completed Application Form.
- Proof of payment of the entrance fee.

The application will then be reviewed by the Chairman, Directors, and General Manager of Mount Kipipiri Golf & Resort.

Membership Terms

Expatriate Members shall enjoy full privileges and access to the Club's facilities for a maximum period of three (3) years, subject to payment of the fees and deposits applicable to this membership category.

Transition to Full Membership

After completing the three (3) year term as an Expatriate Member, the candidate may apply for Full Membership. Upon acceptance, they will be required to pay the entrance fee, less twenty-five percent (25%), in recognition of their prior membership.

JUNIOR MEMBERSHIP APPLICATION PROCESS



Eligibility

Junior Membership is open to biological children or legal wards of current Full Members of Mount Kipipiri Golf & Resort, provided they are under the age of twenty-five (25).

Application Process

The parent or legal guardian must complete the official Junior Membership Application Form on behalf of the candidate.

Required Documentation

The application must be accompanied by the candidate's:

- Birth certificate.
- Legal adoption documentation (if applicable).
- Recent passport-sized photograph.

Introduction

The junior candidate must be introduced in person, together with one of their legal guardians.

Approval Process

Completed applications will be submitted to the Membership Vetting Committee, comprising the Chairman, Directors, and General Manager, for final approval.

Membership Privileges

Junior Members will have access to the Club's facilities and benefits as defined by their membership category but will not have voting rights or the ability to invite guests who are not members.

Fees

There is no entrance fee for Junior Membership. However, a nominal annual subscription fee will apply in accordance with the Club's prevailing rates.

Responsibility

The parent or guardian will be fully responsible for the junior member's conduct, behaviour, and any charges incurred while on Club premises.

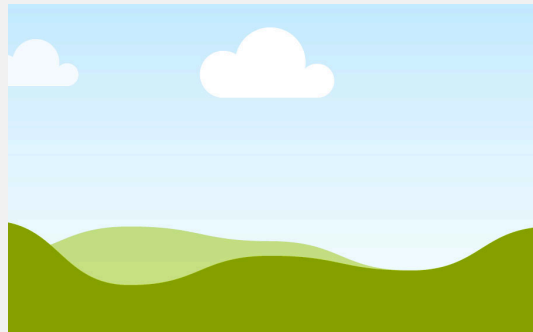
MEMBERSHIP FEES



MEMBERSHIP CATEGORY	JOINING FEE	ANNUAL SUBSCRIPTION
Single (Full Membership)	KES 500,000	KES 125,000
Family	KES 800,000	KES 185,000
Expatriate	-	\$1,800

JUNIOR MEMBERSHIP TO FULL MEMBERSHIP CONVERSION RATES	
LESS THAN 3 YEARS	70% Of the full membership fee
3 - 5 YEARS	50% of the full membership fee
OVER 5 YEARS	25% of the full membership fee

THE COURSE



Mount Kipipiri Golf Course is a championship 18-hole, par-72 layout stretching 7,100 yards across 200 acres of highland terrain. Designed to blend challenge and beauty, the course offers distinct play on each nine.

The front nine features gently rolling fairways, wide landing zones and picturesque water features—ideal for strategic yet accessible play. In contrast, the back nine presents a more rugged layout, with dramatic elevation changes and native tree-lined fairways that test precision and shot-making. Signature holes include:

Hole 6 – A scenic par 4 island green, requiring careful club selection

Hole 9 – A dramatic finishing hole with 22 bunkers around the green

Thoughtfully designed to suit both social golfers and serious competitors, the course reflects the region’s natural beauty while offering a compelling setting for tournaments and retreats.

OUR FACILITY

Our Current Facilities include:

- A state-of-the-art clubhouse designed to accommodate players and guests in comfort and style.
- Tournament-standard men's and women's changing rooms.
- Whispers by Red Ginger – our fine dining restaurant featuring international cuisine.
- A scenic bar with views of the 9th and 18th holes.
- Corporate meeting spaces ideal for retreats, strategy sessions and private events.
- Breathtaking hiking and biking trails through the forested highlands.
- Fully furnished serviced apartments for a restful overnight stay.
- A pro shop offering essentials, branded merchandise and gear.



- We're expanding to enhance the experience even further. Some of our future developments include:
- Luxury hotel rooms and glamping tents for immersive highland stays.
- Sports facilities including padel courts, tennis courts, a football pitch and golf driving range.
- A versatile event space for weddings, launches and large-scale functions.
- A full-service spa for relaxation and rejuvenation.
- Restoration of the over 100-year-old colonial Kipipiri House into a museum and guest experience center.

Mount Kipipiri Golf & Resort is not just a course — it's a growing destination where golf, nature, hospitality & adventure come together!

HERITAGE & CULTURE



Mount Kipipiri Golf & Resort is more than a scenic retreat – it is a living storybook of Kenya’s rich history, culture and natural heritage.

At the heart of our property stands the century-old Kipipiri House, a colonial-era farmhouse steeped in the legacy of the Happy Valley era. We are in the process of restoring this landmark and its manicured gardens, preserving its architecture and character while transforming it into a heritage center and museum. Visitors will be invited to walk through Kenya’s past, learning about the region’s social and cultural evolution through carefully curated exhibits and storytelling.

Our commitment to sustainability and conservation is evident in our protection of over 900 acres of untouched forest, which is home to a thriving population of endangered Colobus monkeys. We work to conserve this ecosystem and educate visitors on the importance of biodiversity, partnering with conservation groups for ongoing forest and wildlife protection initiatives.

MAZINGIRA ETHOS



At Mount Kipipiri Golf & Resort, sustainability is not an afterthought – it is the essence of how we operate. Guided by **The Mazingira Ethos**, our philosophy is built on three pillars: **People**, **Planet**, and **Heritage**, ensuring that every decision we make contributes to a balanced and enduring future.

Across our 1,500-acre property, 900 acres of indigenous forest have been preserved to maintain the region's ecological integrity for generations to come. This protected land serves as a sanctuary for the endangered Colobus monkeys, whose conservation remains a core priority. To further strengthen our environmental commitment, over 10,000 trees have been planted along the property's boundary, with an additional 100 trees planted in partnership with the Professional Golfers of Kenya as part of our ongoing reforestation efforts.

Rooted in community, the Mazingira Ethos also defines our social responsibility. The resort provides free clean water to nearby villages, donated land for the construction of a new school, and continues to fund exam papers and daily meals for all students at the local primary school.

With over 1,400 local residents employed, Mt. Kipipiri is proud to empower the community through sustainable livelihoods and skills development across hospitality, maintenance, agriculture, and security.

Through The Mazingira Ethos, Mount Kipipiri Golf & Resort stands as more than a destination – it is a living expression of harmony between people, land, and heritage.

